

July Conditions & Northeast DEWS Discussion

By: Samantha Borisoff, Climatologist
Northeast Regional Climate Center



Northeast Regional
Climate Center



July Temperatures



From 4°F below normal to 2°F above normal

July Precipitation



From less than 25% of normal to 200% of normal

July Precipitation



Tropical Storm Elsa



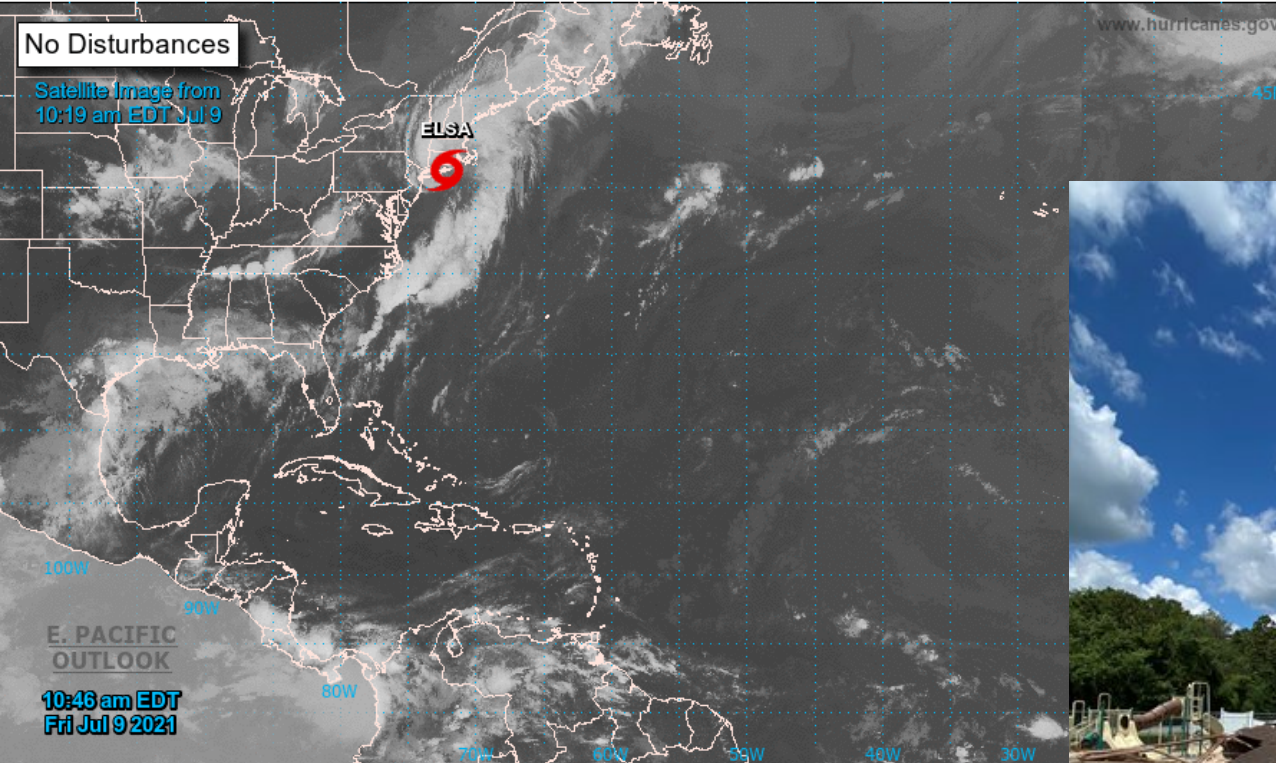
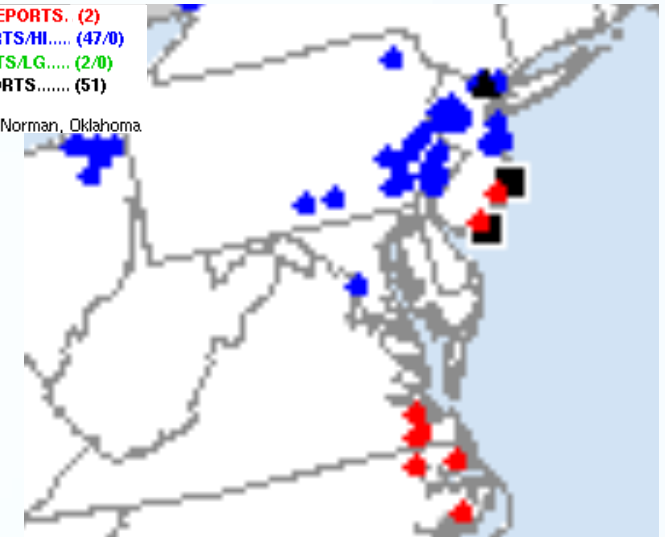
Two-Day Graphical Tropical Weather Outlook National Hurricane Center Miami, Florida



TORNADO REPORTS..... (2)
WIND REPORTS/HI..... (47/0)
HAIL REPORTS/LG..... (2/0)
TOTAL REPORTS..... (51)

National Weather Service
Storm Prediction Center

Norman, Oklahoma



Current Disturbances and Two-Day Cyclone Formation Chance: < 40% 40-60%
 Tropical or Sub-Tropical Cyclone: Depression Storm Hurricane
 Post-Tropical Cyclone or Remnants

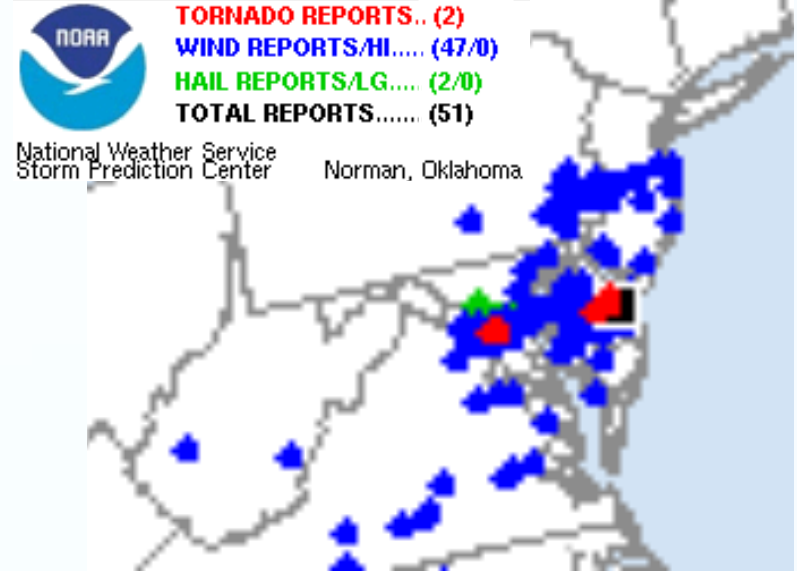


ISSUED: 5:47 PM - Friday,
July 9, 2021
NWS Philadelphia/Mt. Holly



July Severe Weather

Courtesy of
NWS BGM



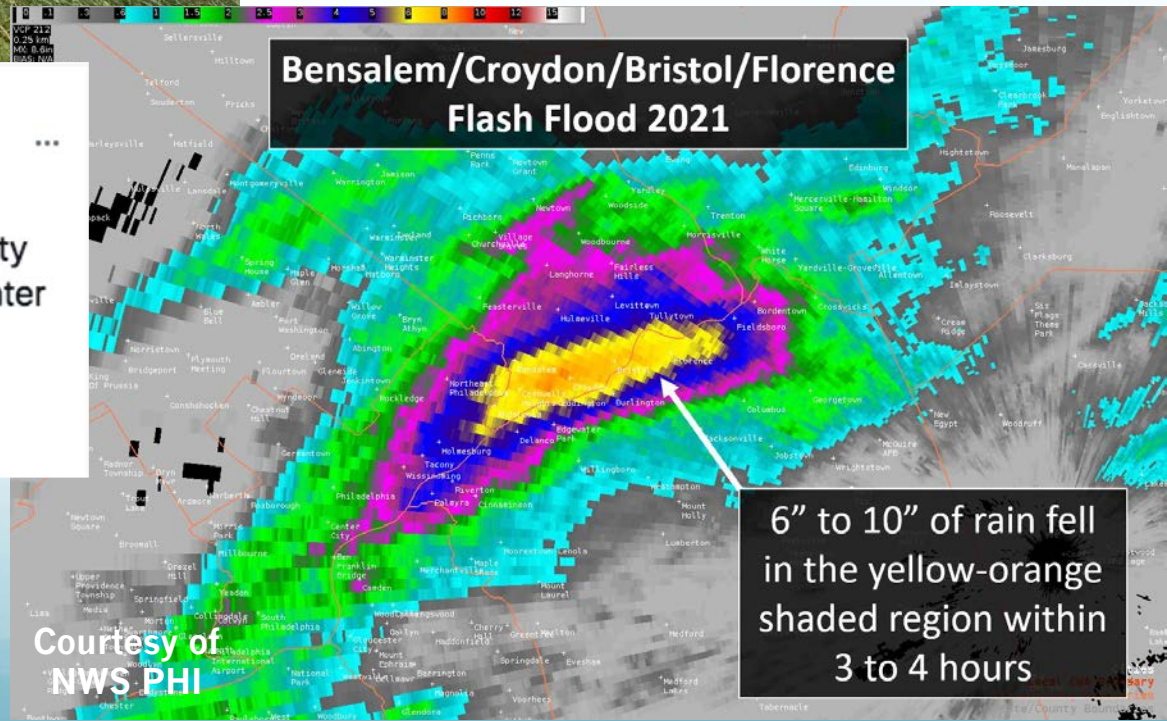
NWS Mount Holly Retweeted



Bensalem Fire Rescue
@Bensalem_Fire

Numerous Marine Units from throughout Bucks County are on in Bensalem or en-route to assist numerous water / marine rescues. Please stay home and off the roadways!!

7:33 PM · Jul 12, 2021 · Twitter for iPhone



Drought Monitor

U.S. Drought Monitor Northeast Climate Region

June 29, 2021
(Released Thursday, Jul. 1, 2021)
Valid 8 a.m. EDT

Drought Conditions (Percent Area)

	None	D0	D1	D2	D3	D4
Current	58.59	21.37	16.53	3.51	0.00	0.00
Last Week 06-22-2021	58.57	21.98	18.34	1.11	0.00	0.00
3 Months Ago 03-30-2021	62.96	28.35	8.69	0.00	0.00	0.00
Start of Calendar Year 12-29-2020	77.60	18.77	3.63	0.00	0.00	0.00
Start of Water Year 09-29-2020	29.84	24.85	19.05	22.37	3.89	0.00
One Year Ago 06-30-2020	54.44	31.33	14.23	0.00	0.00	0.00

Intensity:

- None
- D0 Abnormally Dry
- D1 Moderate Drought
- D2 Severe Drought
- D3 Extreme Drought
- D4 Exceptional Drought

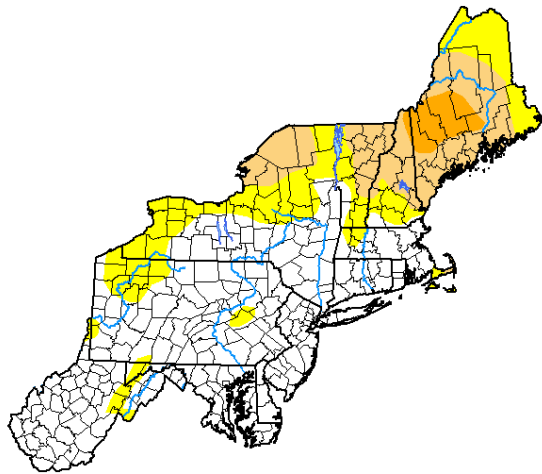
The Drought Monitor focuses on broad-scale conditions. Local conditions may vary. For more information on the Drought Monitor, go to <https://droughtmonitor.unl.edu/About.aspx>

Author:

Deborah Bathke
National Drought Mitigation Center



droughtmonitor.unl.edu



U.S. Drought Monitor Northeast Climate Region

July 27, 2021
(Released Thursday, Jul. 29, 2021)
Valid 8 a.m. EDT

Drought Conditions (Percent Area)

	None	D0	D1	D2	D3	D4
Current	77.06	14.26	7.31	1.38	0.00	0.00
Last Week 07-20-2021	77.09	11.77	9.57	1.58	0.00	0.00
3 Months Ago 04-27-2021	45.90	40.56	13.54	0.00	0.00	0.00
Start of Calendar Year 12-29-2020	77.60	18.77	3.63	0.00	0.00	0.00
Start of Water Year 09-29-2020	29.84	24.85	19.05	22.37	3.89	0.00
One Year Ago 07-28-2020	28.93	42.43	26.93	1.72	0.00	0.00

Intensity:

- None
- D0 Abnormally Dry
- D1 Moderate Drought
- D2 Severe Drought
- D3 Extreme Drought
- D4 Exceptional Drought

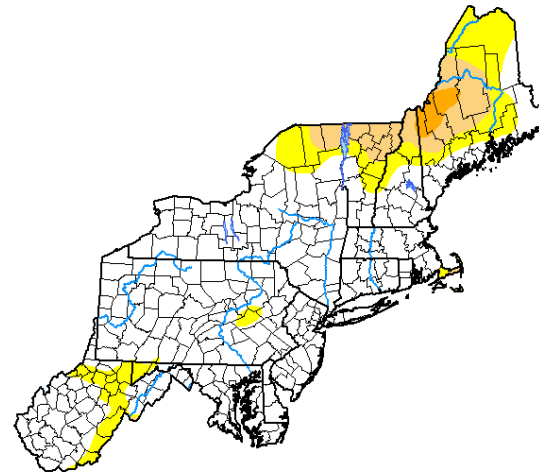
The Drought Monitor focuses on broad-scale conditions. Local conditions may vary. For more information on the Drought Monitor, go to <https://droughtmonitor.unl.edu/About.aspx>

Author:

Brad Rippey
U.S. Department of Agriculture



droughtmonitor.unl.edu



Drought Monitor

U.S. Drought Monitor Northeast DEWS

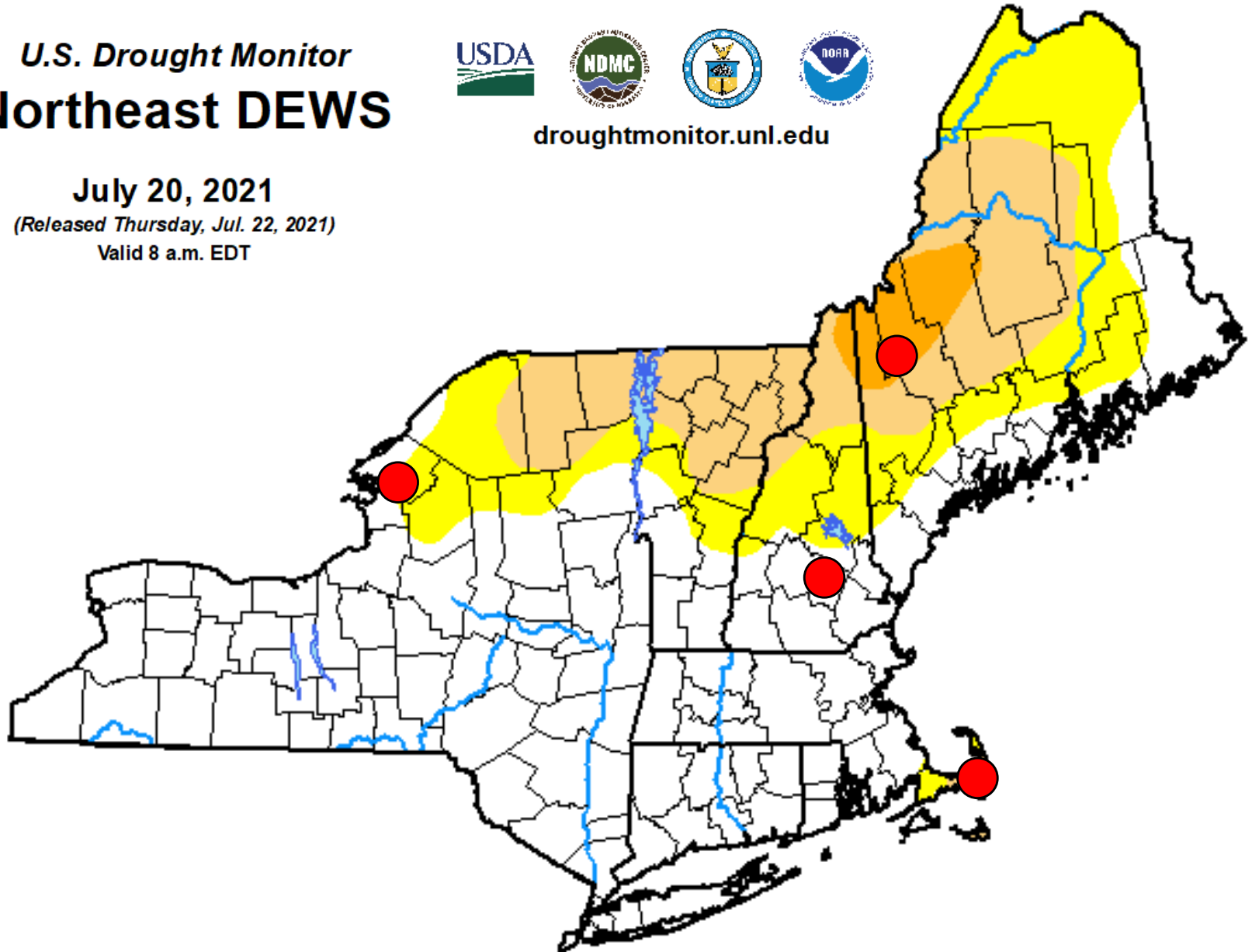


droughtmonitor.unl.edu

July 20, 2021

(Released Thursday, Jul. 22, 2021)

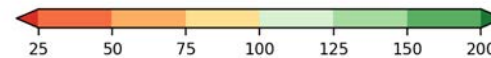
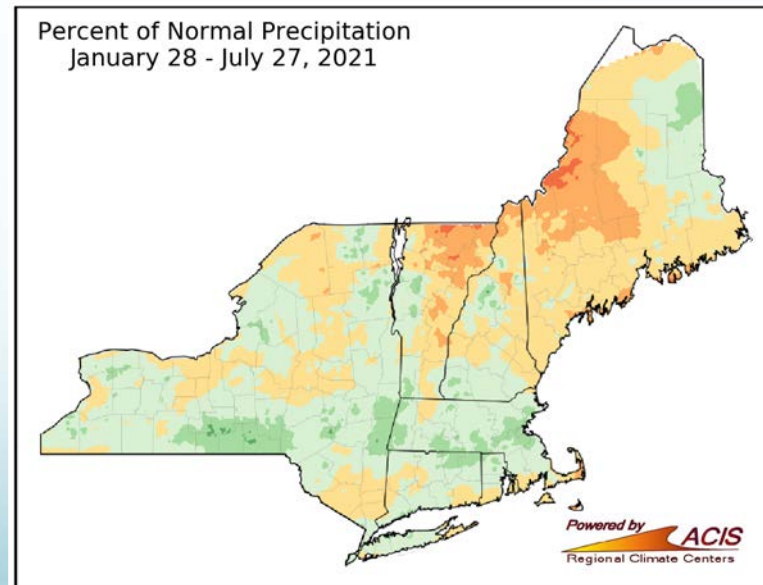
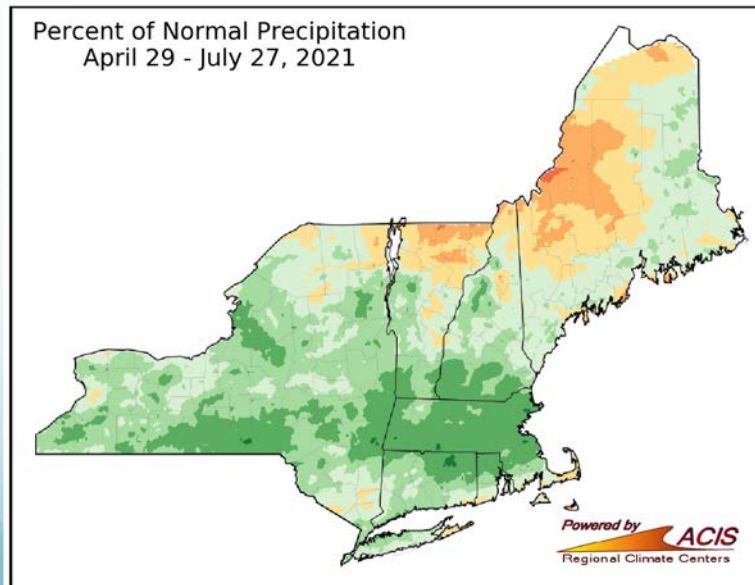
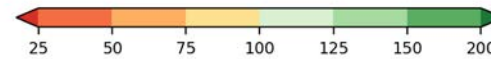
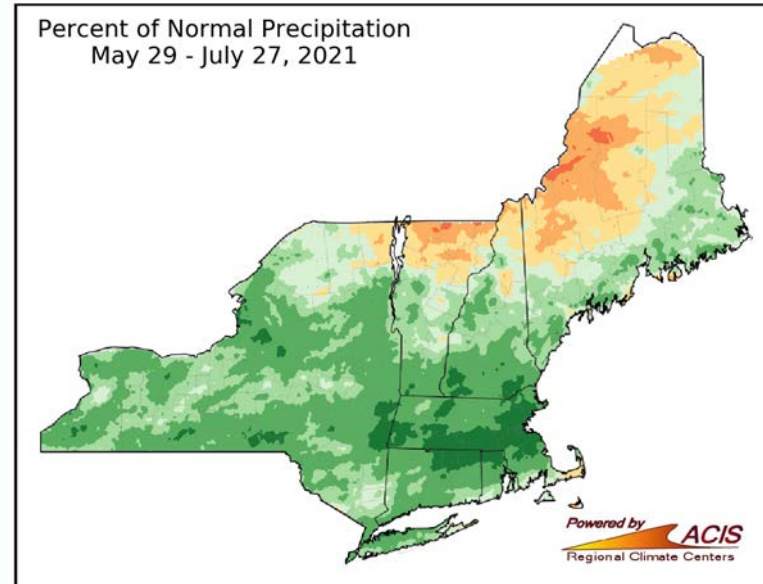
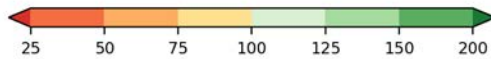
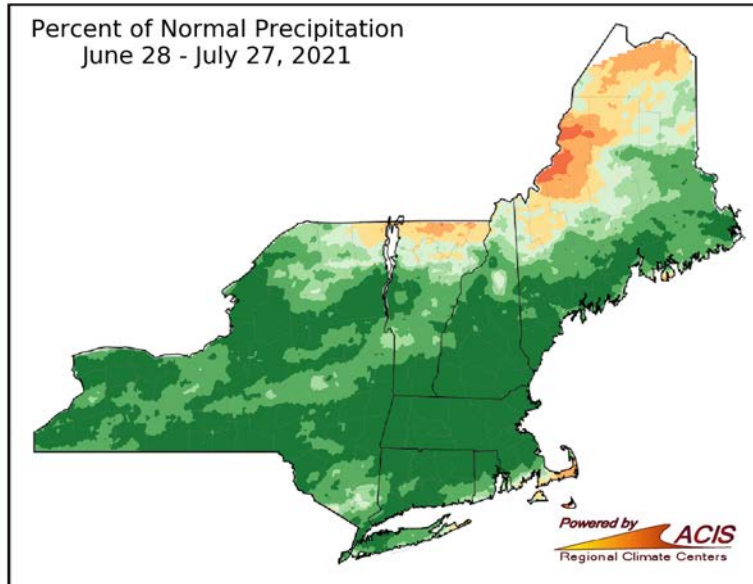
Valid 8 a.m. EDT



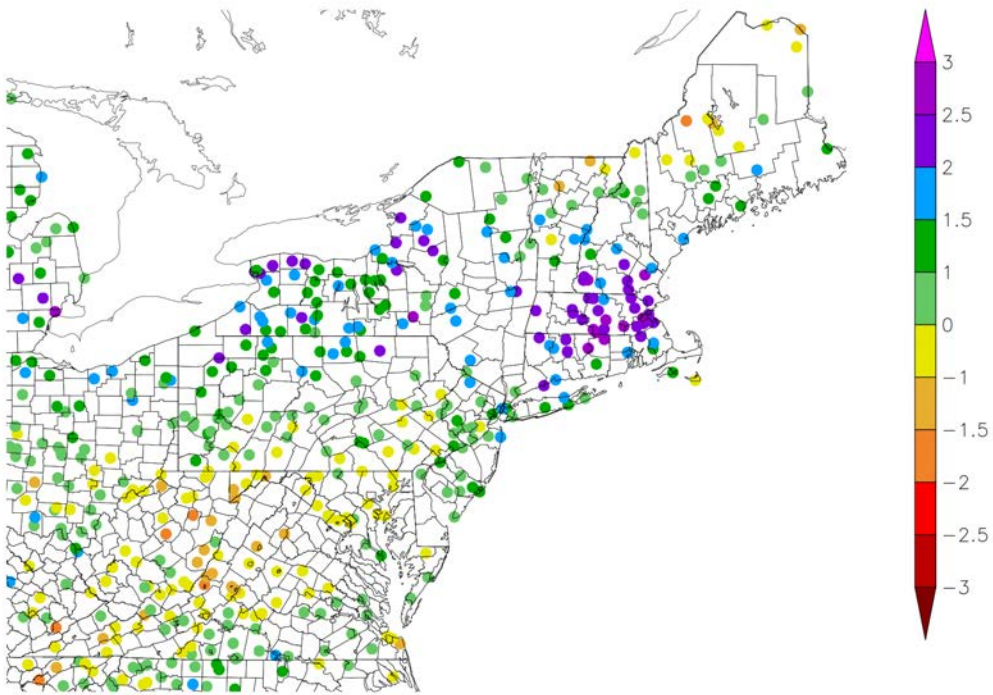
Precipitation



Precipitation

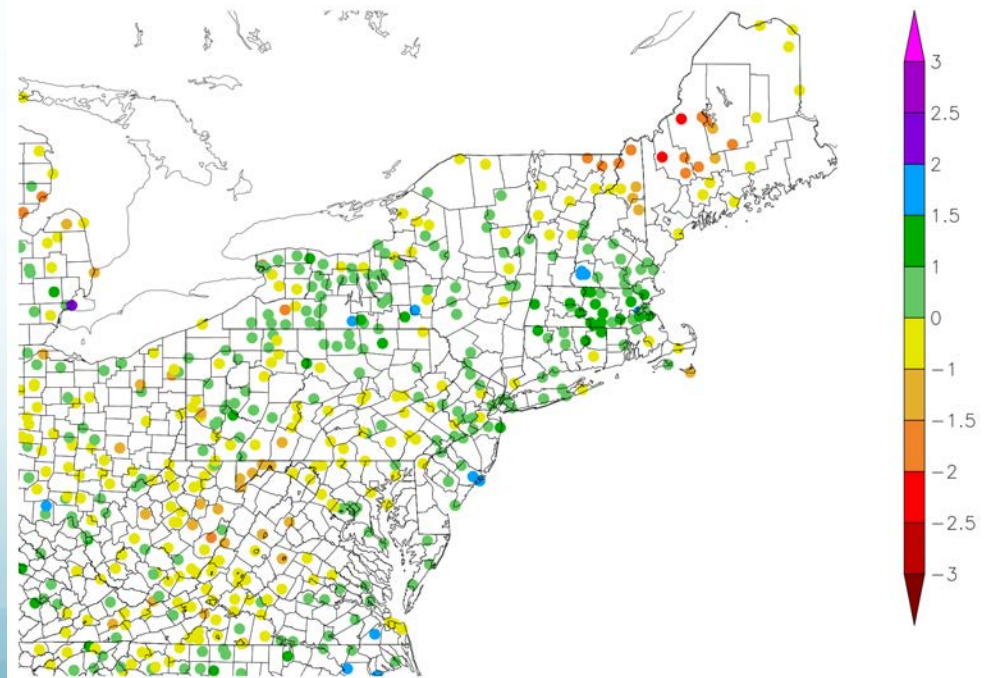


30 Day SPI
6/25/2021 - 7/24/2021



Standardized Precipitation Index

6 Month SPI
1/27/2021 - 7/26/2021



Evap. Demand Drought Index



Soil Moisture



Streamflow





Groundwater



Known Water Use Restrictions

Last Update: 7/22/2021



Legend

-  County Boundary
-  Town Boundary

Drought Condition

-  Abnormally Dry
-  Moderate Drought
-  Severe Drought
-  Extreme Drought

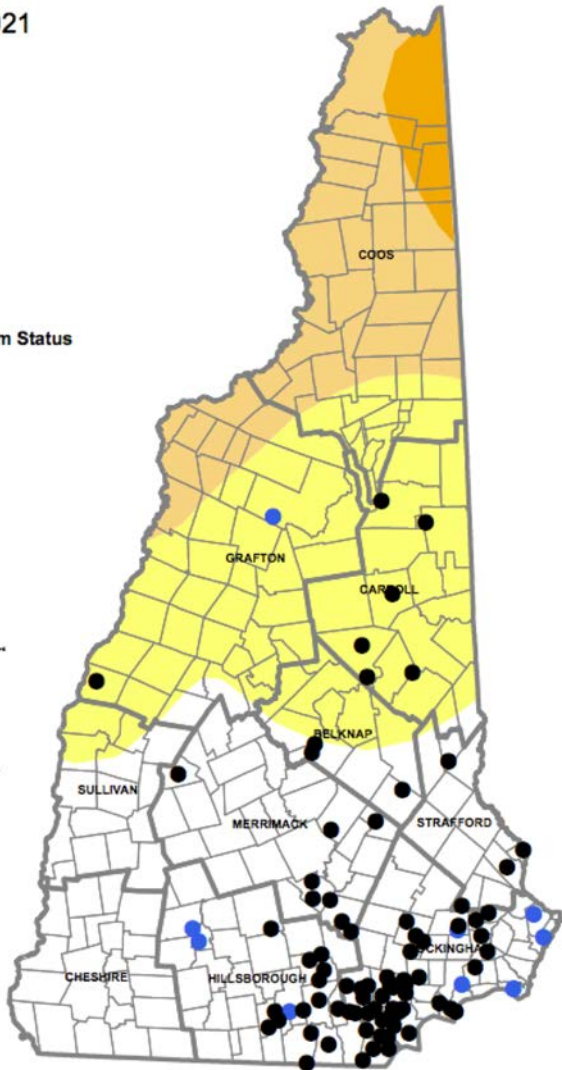
Municipality or Water System Status

-  Voluntary Restriction
-  Mandatory Restriction



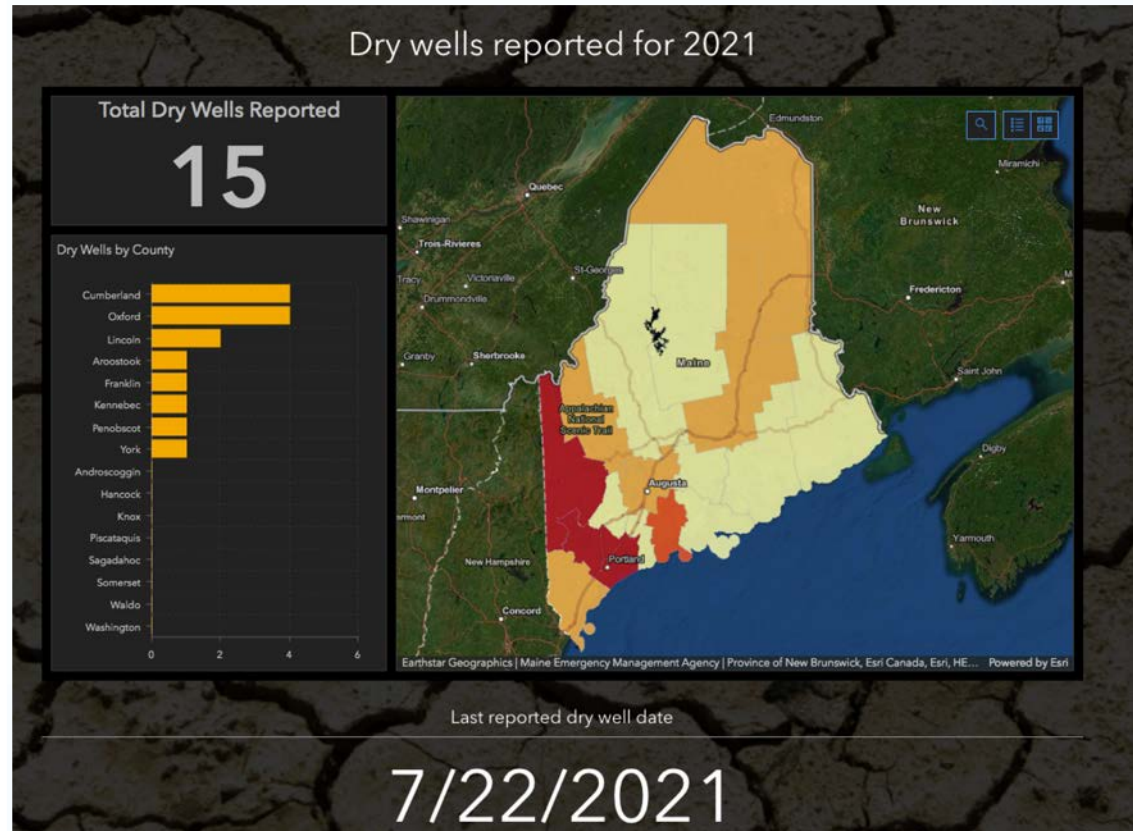
Drought Conditions based on United States Drought Monitor (<https://droughtmonitor.unl.edu/CurrentMap/StateDroughtMonitor.aspx?NH>)

Disclaimer: The status of water use restrictions is based on information submitted to the New Hampshire Department of Environmental Services and may not be comprehensive.



Impacts

Dry wells reported for 2021



Last reported dry well date

7/22/2021

<https://maine-dry-well-survey-maine.hub.arcgis.com/>



<https://anrmaps.vermont.gov/websites/droughtreporter/>

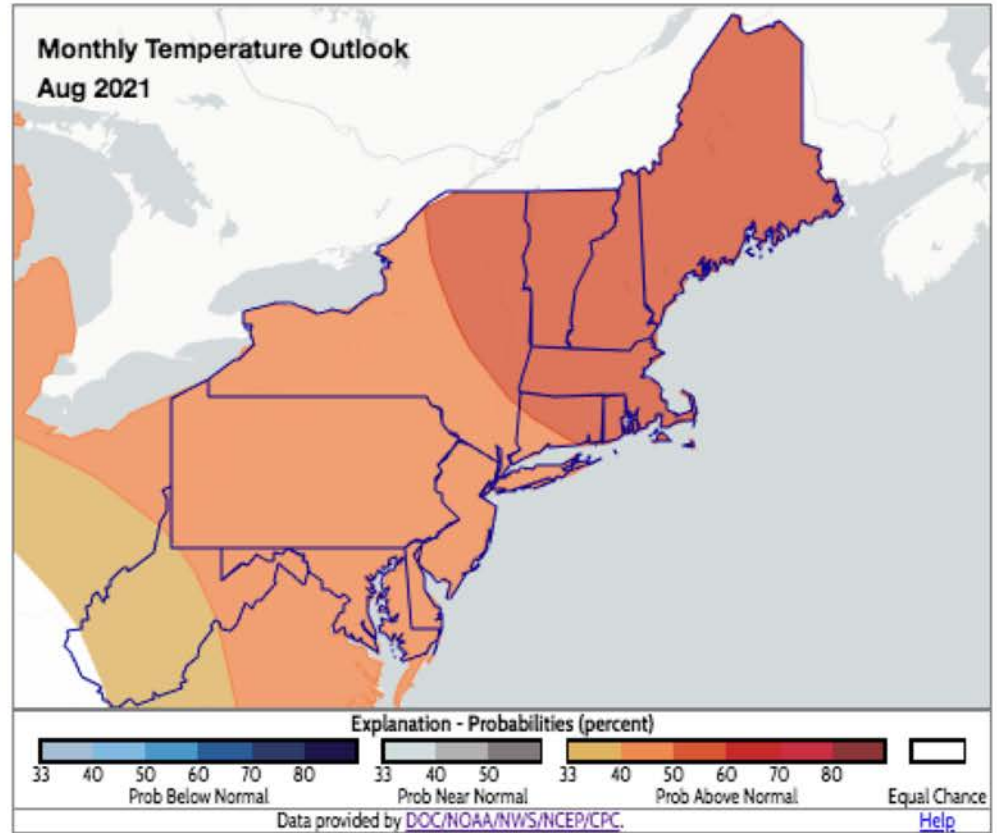
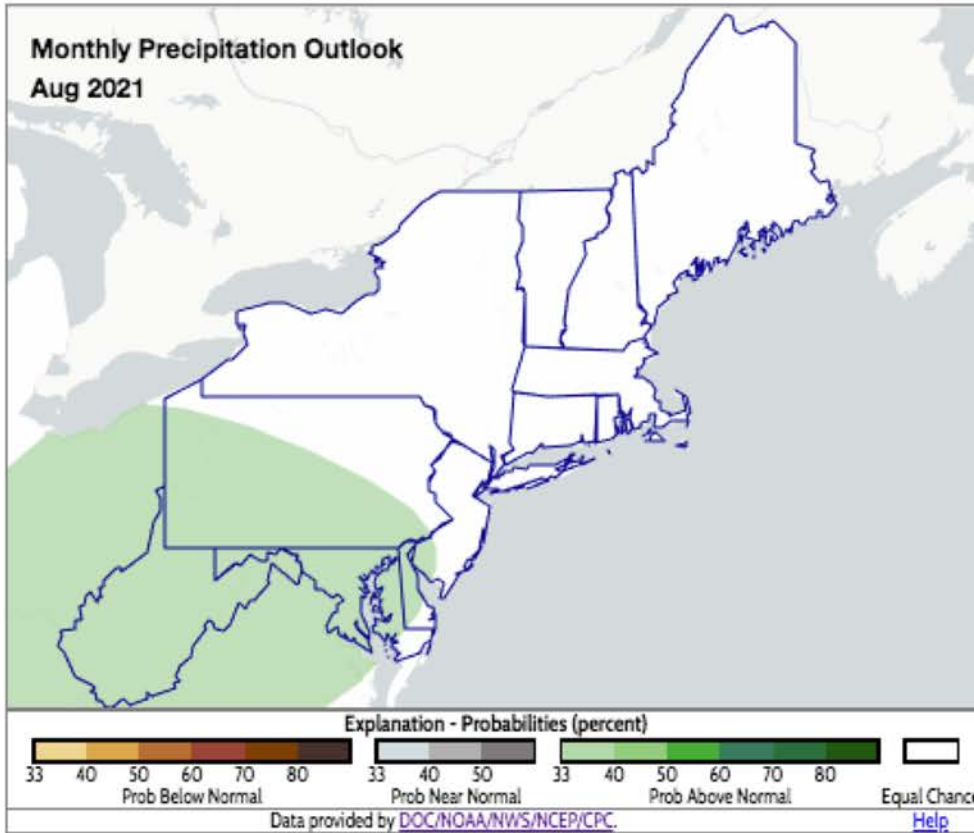
Precipitation Forecast



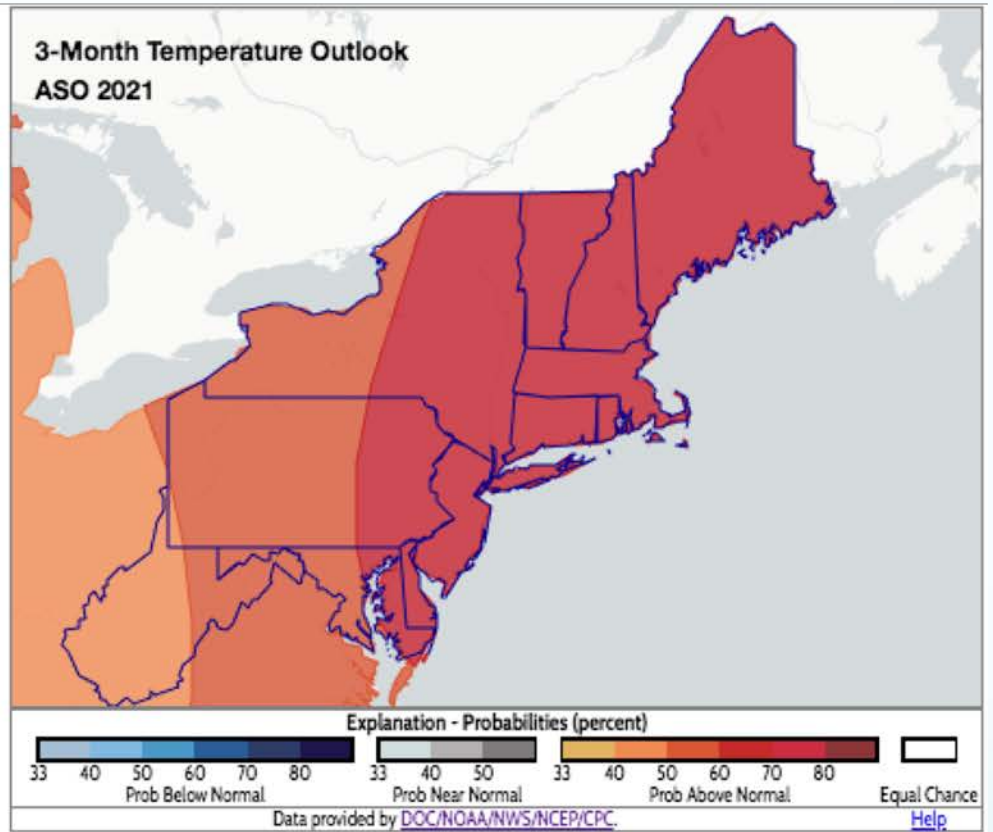
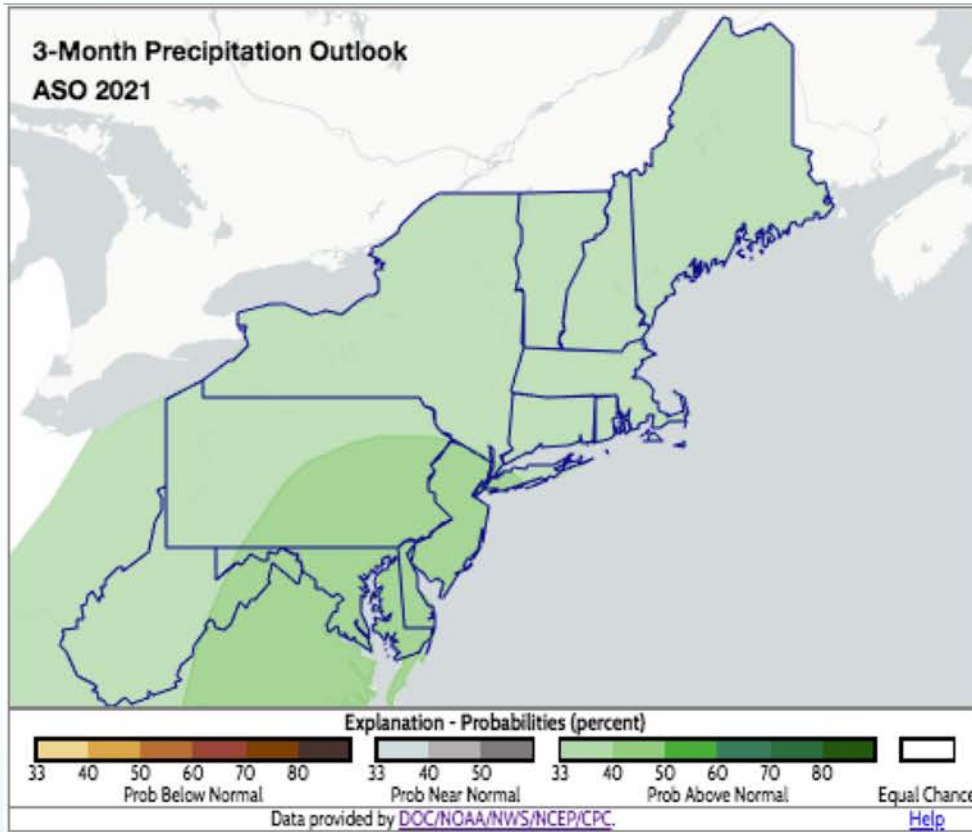
Short-term Outlooks



Monthly Outlook



Three-Month Outlook



Contact Information

- nrcc@cornell.edu

Upcoming Webinars

- Tuesday, August 31 at 9:30am
 - Atlantic hurricane season outlook



www.nrcc.cornell.edu