

# Dongbu HiTek

*The Best Foundry Partner For Your Success*

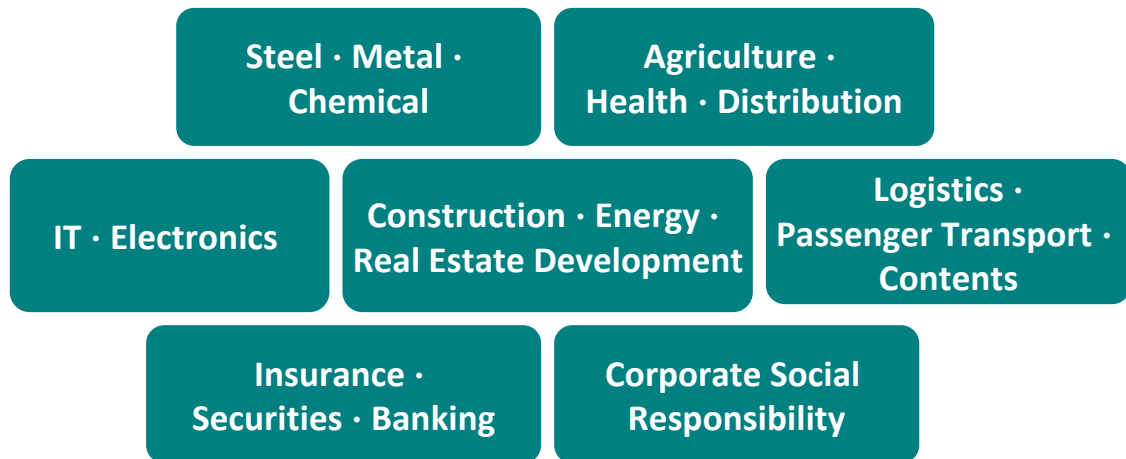
# Contents

- **Dongbu Group Overview**
- **Company Overview**
- **History**
- **Status in World Market**
- **Organization Chart**
- **Facilities**
- **Global Network**
- **Capacity**
- **Technology Expertise**
- **Portfolio**
- **Technology Roadmap**
- **Customer Support**

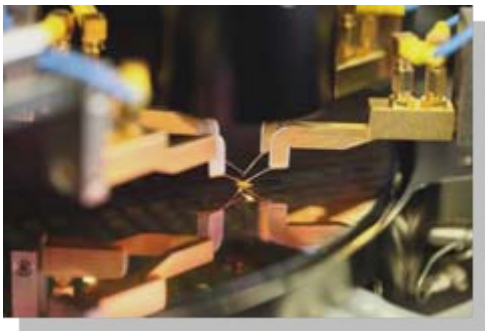
# Dongbu Group Overview



- **Established: 1969**
- **Sales: US \$20 billion**
- **Asset: US \$37 billion (2010)**
- **No. of Employees: 35,000**
- **No. of Subsidiaries: 42**
- **Business Areas: 7 (See Below)**



# Company Overview



<b>Established</b>	<b>1997</b>
<b>Sales</b>	<b>US \$ 593 million (2010)</b>
<b>Asset</b>	<b>US \$ 1.3 billion (2010)</b>
<b>No. of Employees</b>	<b>2,510 (Jun. 2011)</b>
<b>Business Areas</b>	<b>System IC (Analog, Display, RF, etc)</b>
<b>Tech. Node</b>	<b>90nm ~ 0.35um</b>
<b>Capacity</b>	<b>94,000wfrs(200mm)/month</b>

# History

**1997**

- Established Dongbu Electronics
- Completed Fab1 Construction
- Entered into strategic alliance with Texas Instruments

**2000**

- Completed Fab2 Construction
- Entered into strategic alliance with Toshiba

**2004**

- Commenced CMOS foundry processing at the 0.13um node

**2007**

- Sharpened focus on specialized foundry processing; renamed Dongbu HiTek

**2008**

- Launched Industry's first 0.18-micron BCDMOS process

**2010**

- Became world's no.1 company in Specialized foundry

# Status in World Market

## 2010 Specialty Foundry Ranking

2010 Rank	Company	2010
1	Dongbu HiTek	\$512M
2	TowerJazz	\$509M
3	Vanguard	\$505M

Source : Gartner, Mar. 2011

## 2010 Foundry Ranking

(Unit:\$M)

2010 Rank	Company	2010	2009
1	TSMC	13,332	8,997
2	UMC	3,824	2,730
3	Globalfoundries	3,520	1,101
4	SMIC	1,554	1,070
5	Dongbu HiTek	512	378
6	TowerJazz	509	298
7	Vanguard	505	381
8	IBM	500	383
9	MagnaChip	410	265
10	Samsung*	390	290
-	Chartered	0	1,540

Source : Gartner, Mar. 2011

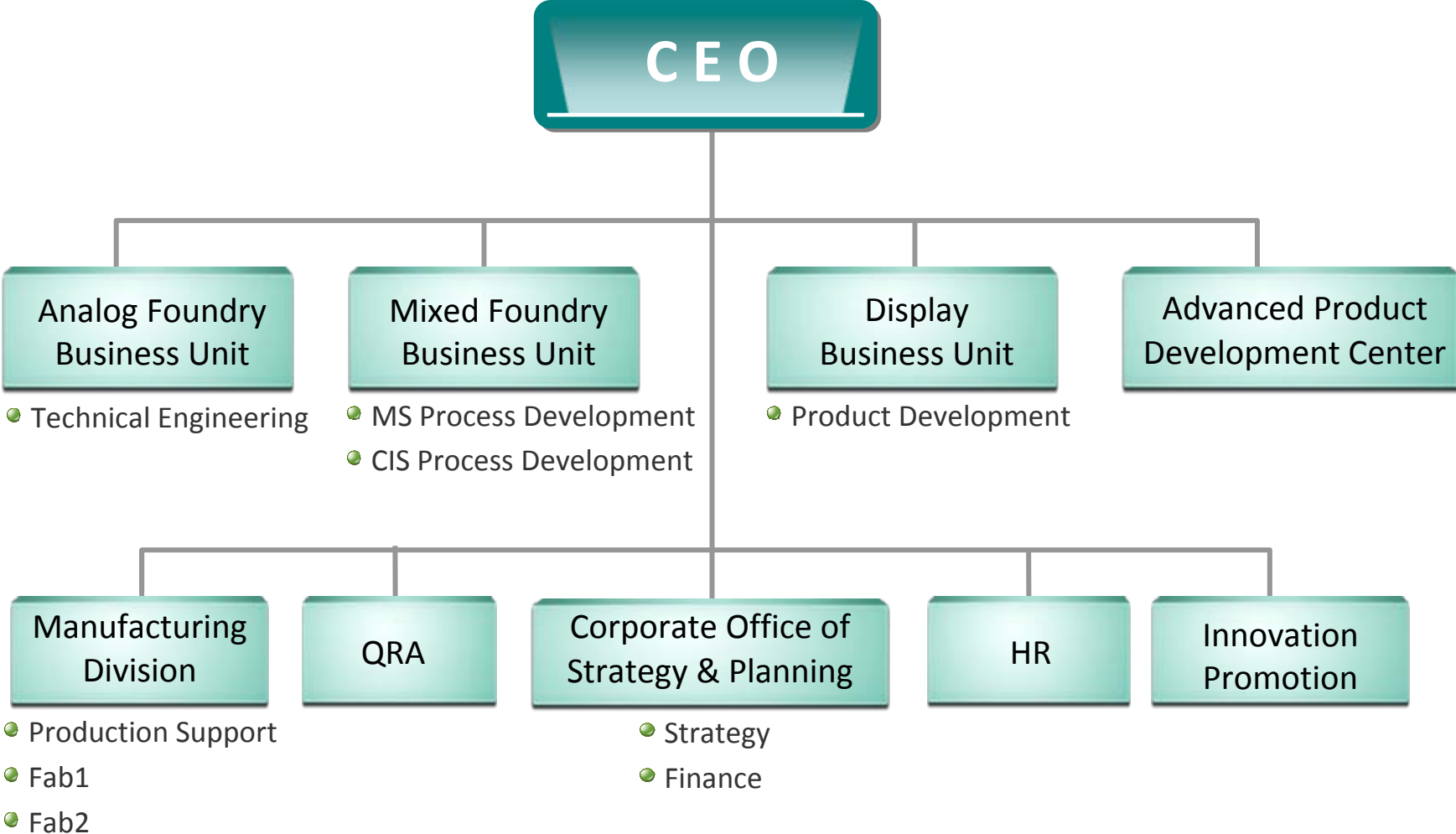
\* Globalfoundries : Dec. 2009, Acquisition of Chartered

## Future leaders in Analog/Mixed-Signal Foundry

Who will succeed in analog/mixed-signal foundry market?		
Company	Odds for success	Comments
TSMC	1-1	Strong IP, resources
IBM: Chartered; Samsung; UMC	2-1	Strong IP, resources
Dongbu; X-Fab	5-1	Good IP, customer base
Vanguard; SSMC	10-1	Backed by TSMC
HHNEC; NEC	15-1	Strong backing
AMI/ON Semi	20-1	Lost in the shuffle?
Austriamicrosystems	25-1	Helped by IBM
SMIC	30-1	Will it need bail out?
MagnaChip; Tower/Jazz	100-1	Spilling red ink
CSMC	150-1	Will new focus work?
Mosel-Vitellic	200-1	Moving into solar

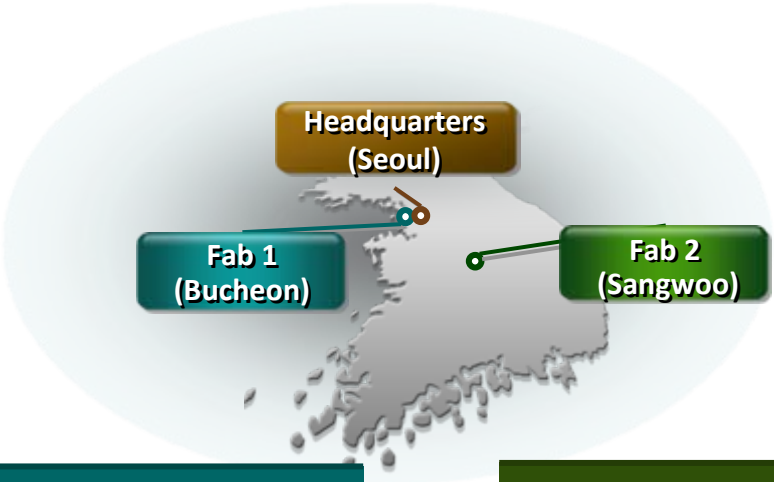
Source : EE Times, 2008

# Organization Chart



# Facilities

Headquarters	
Organization	Administration, Sales & Marketing
Location	Seoul, Korea

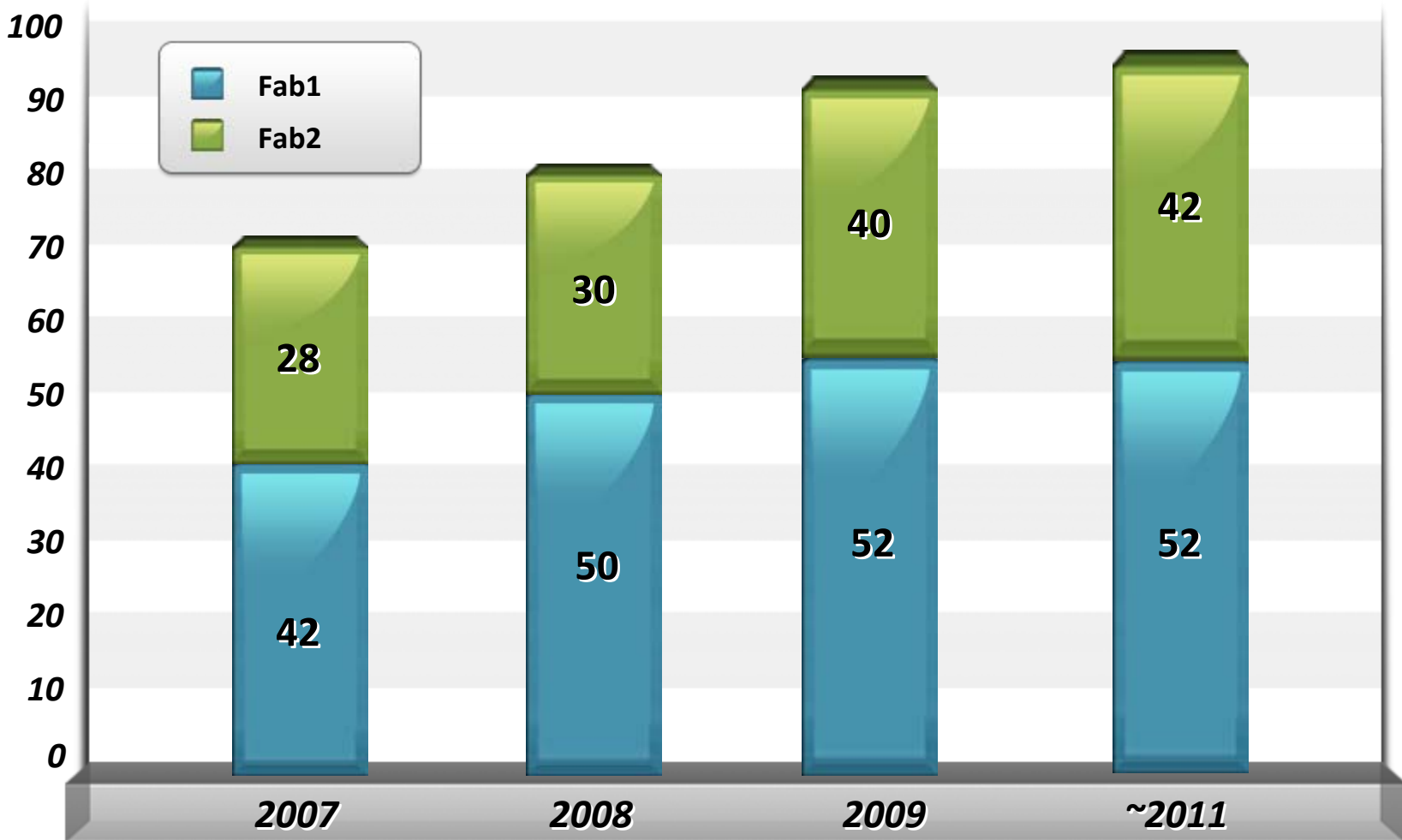


Fab 1	
Capacity	52,000 wafers/month
Tech Nodes	0.35, 0.25, 0.18, 0.15um
Main Technology	BCDMOS, Analog CMOS and HV CMOS, Logic
Wafer Size	200mm (8 inch)
Location	Bucheon, Gyunggi-do

Fab 2	
Capacity	42,000 wafers/month
Tech Nodes	0.25, 0.18, 0.13, 0.11, 0.09um
Main Technology	Mixed Signal, Flash, RF CMOS, CIS and HV CMOS, Logic
Wafer Size	200mm (8 inch)
Location	Eum Sung, Choong Chung Book-do



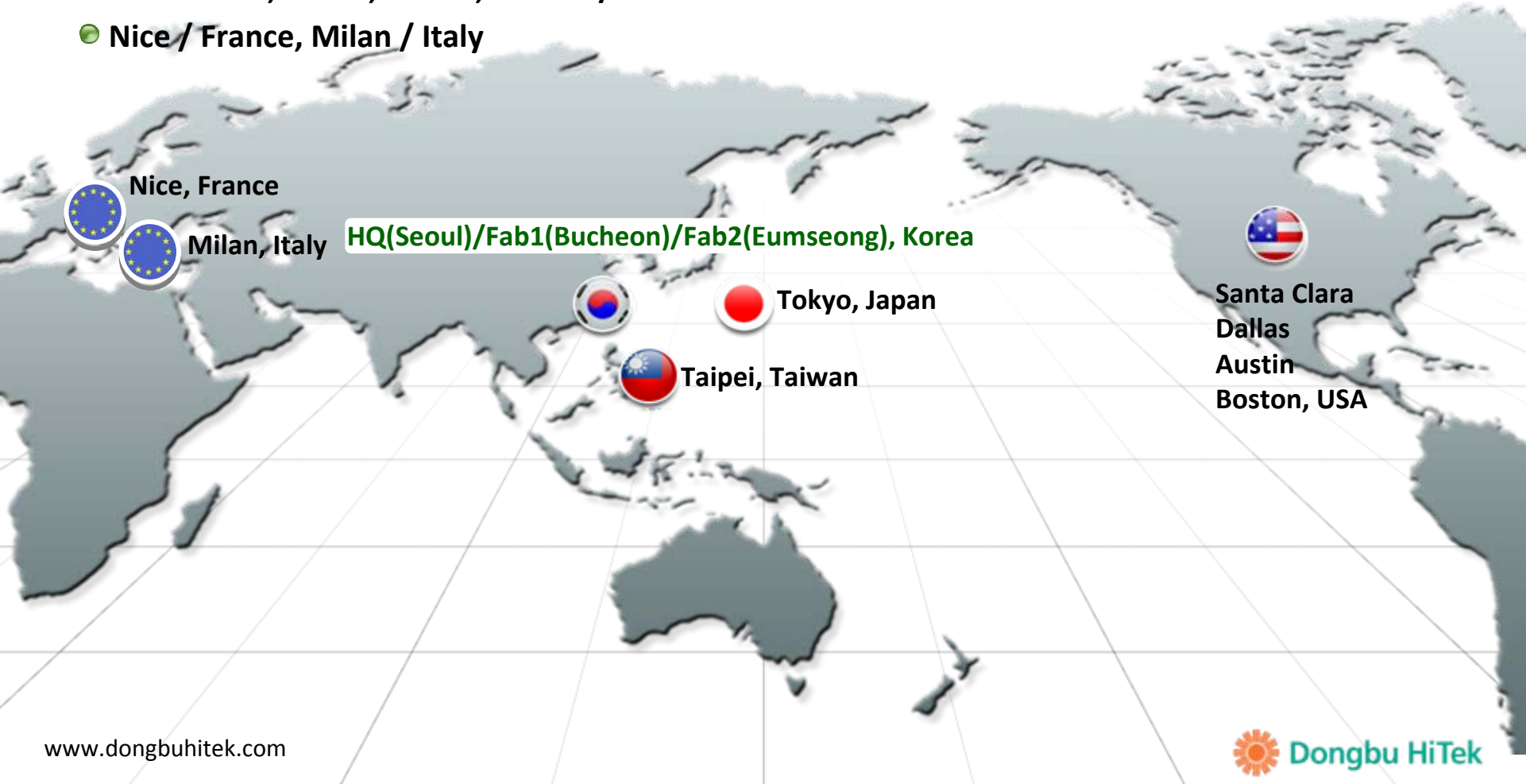
# Capacity



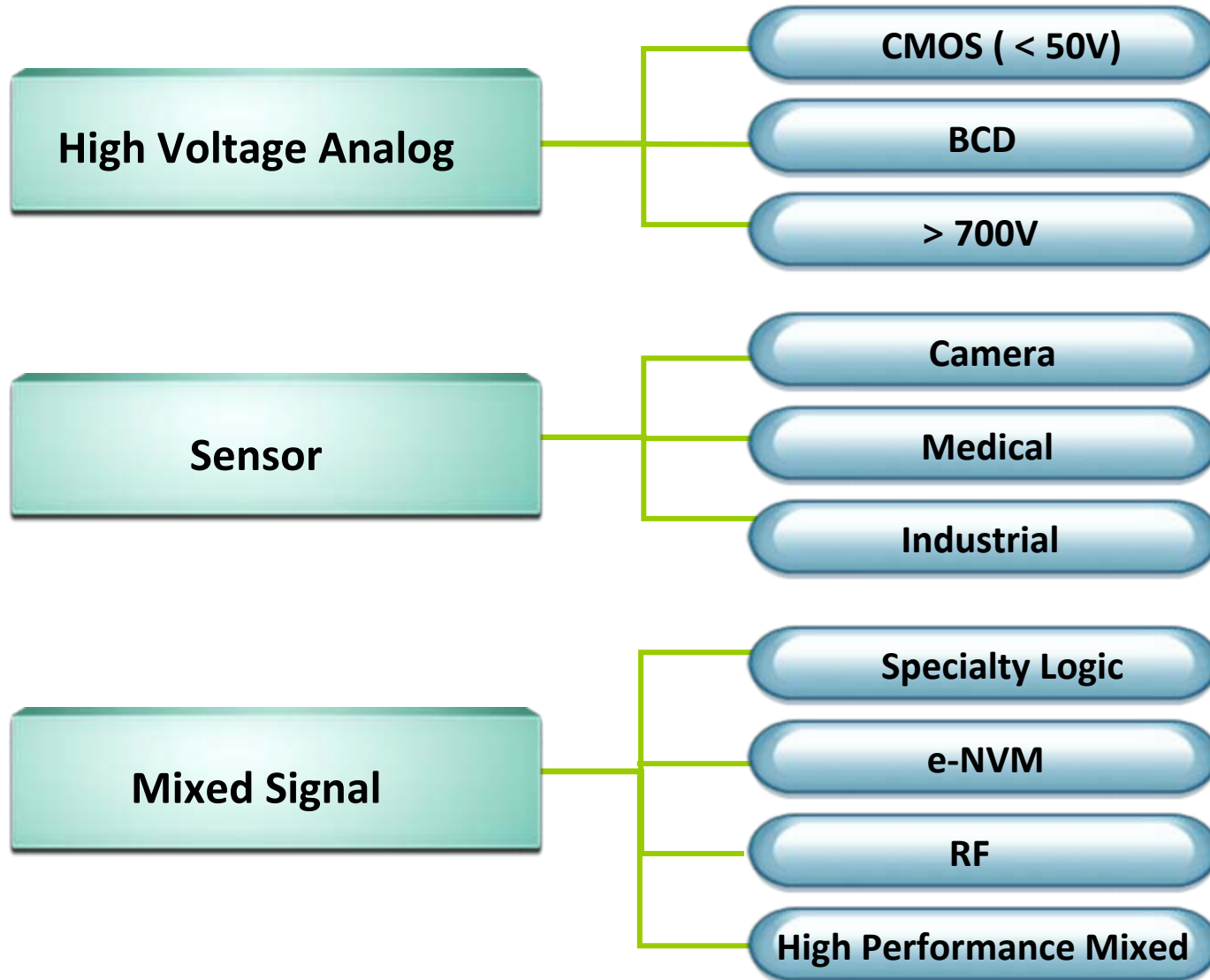
# Sales & R&D Networks

## Sales & R&D Network

- Taipei / Taiwan
- Tokyo / Japan
- Santa Clara, Dallas, Austin, Boston / USA
- Nice / France, Milan / Italy



# Technology Expertise



# Portfolio - 3C + 1I (Computer, Communication, Consumer, Industrial)



## Analog IC

PMIC  
Audio Amp.  
LCD Panel Power IC  
Motor Controller  
LED Driver IC  
Converter



## Image Sensor

Mobile Phone  
Digital Camera  
Camcorder  
Videoconferencing  
Security  
Automotive / Medical



## Display IC

LCD TV  
LCD Monitor  
AMOLED  
Mobile Phone  
PDA  
Digital Photo Frame



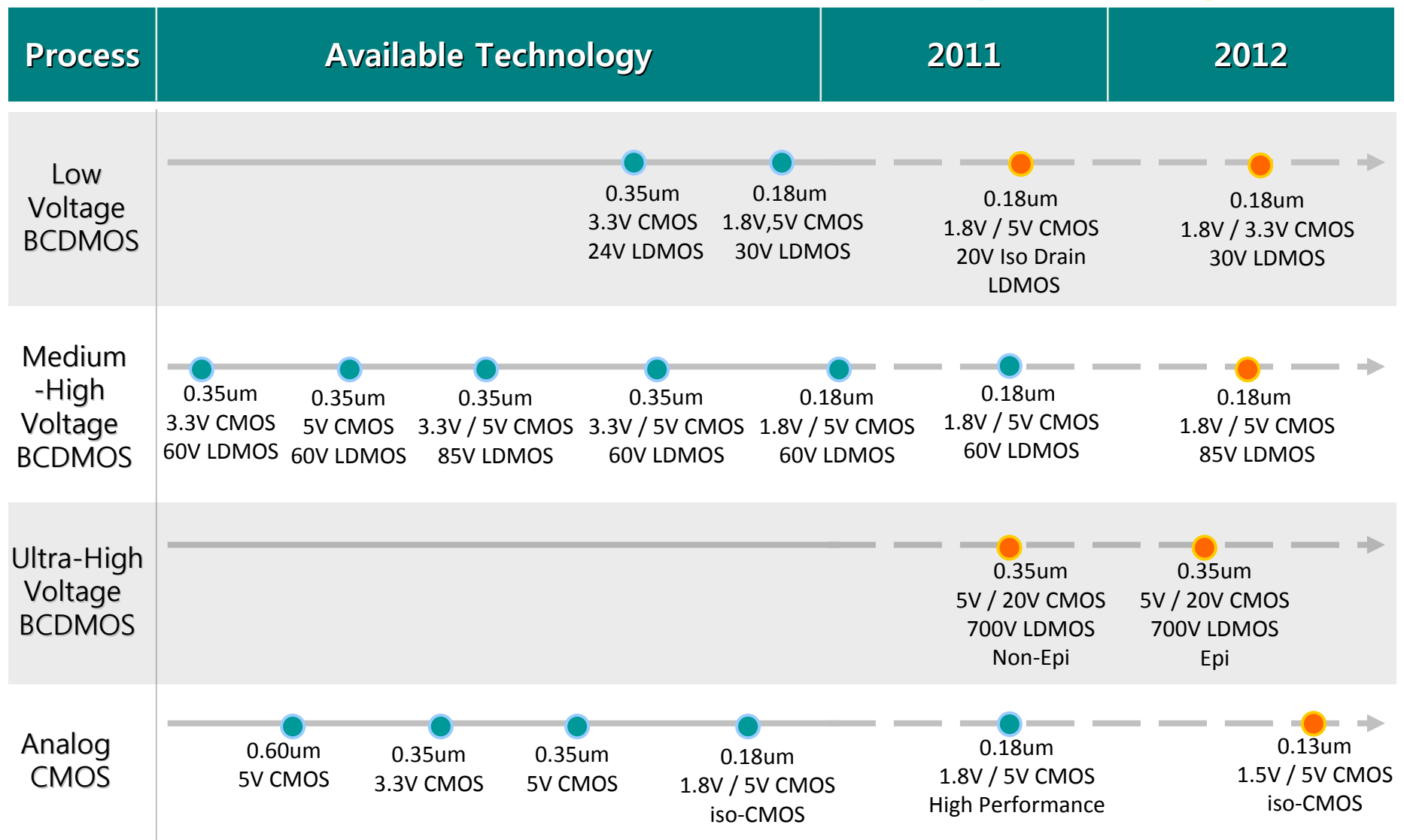
## RF/Flash/Logic

Mobile Phone  
MP3 Player  
Laptop PC  
Set-top Box  
Network Server  
Wireless LAN  
Bluetooth  
Home Appliances



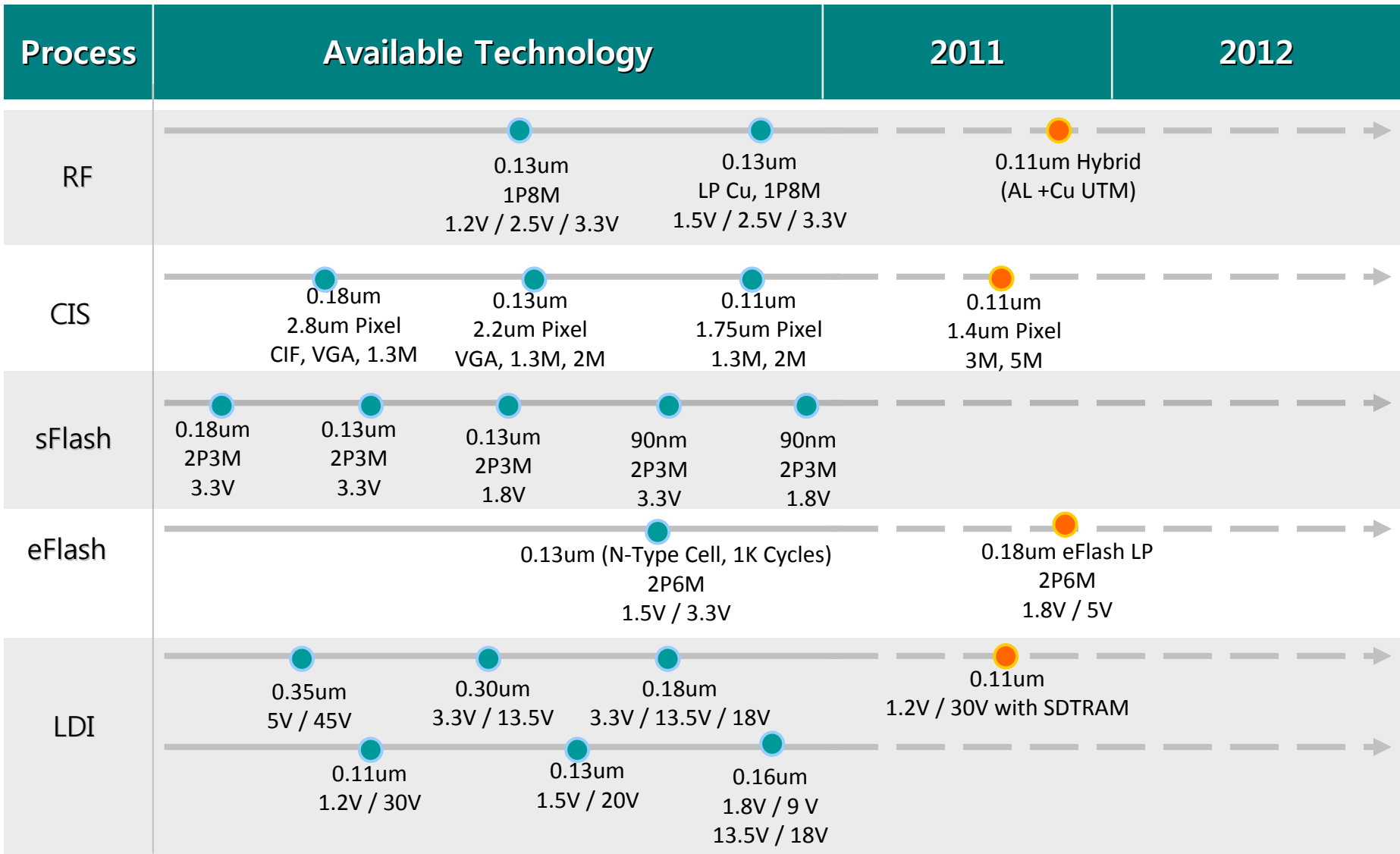
# Technology Roadmap – BCDMOS

 : Available  :Planned



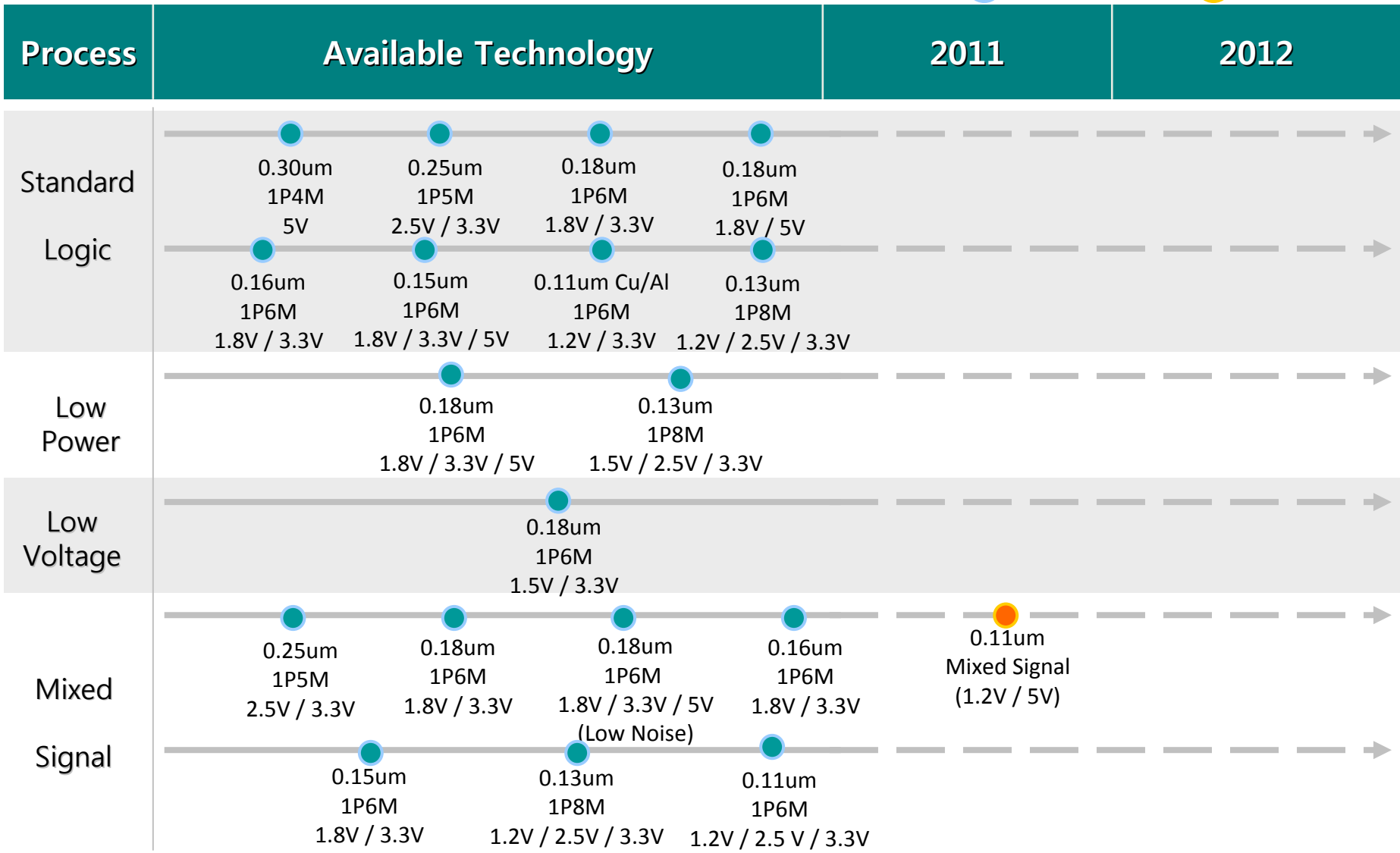
# Technology Roadmap – Mixed -Signal

 : Available  :Planned

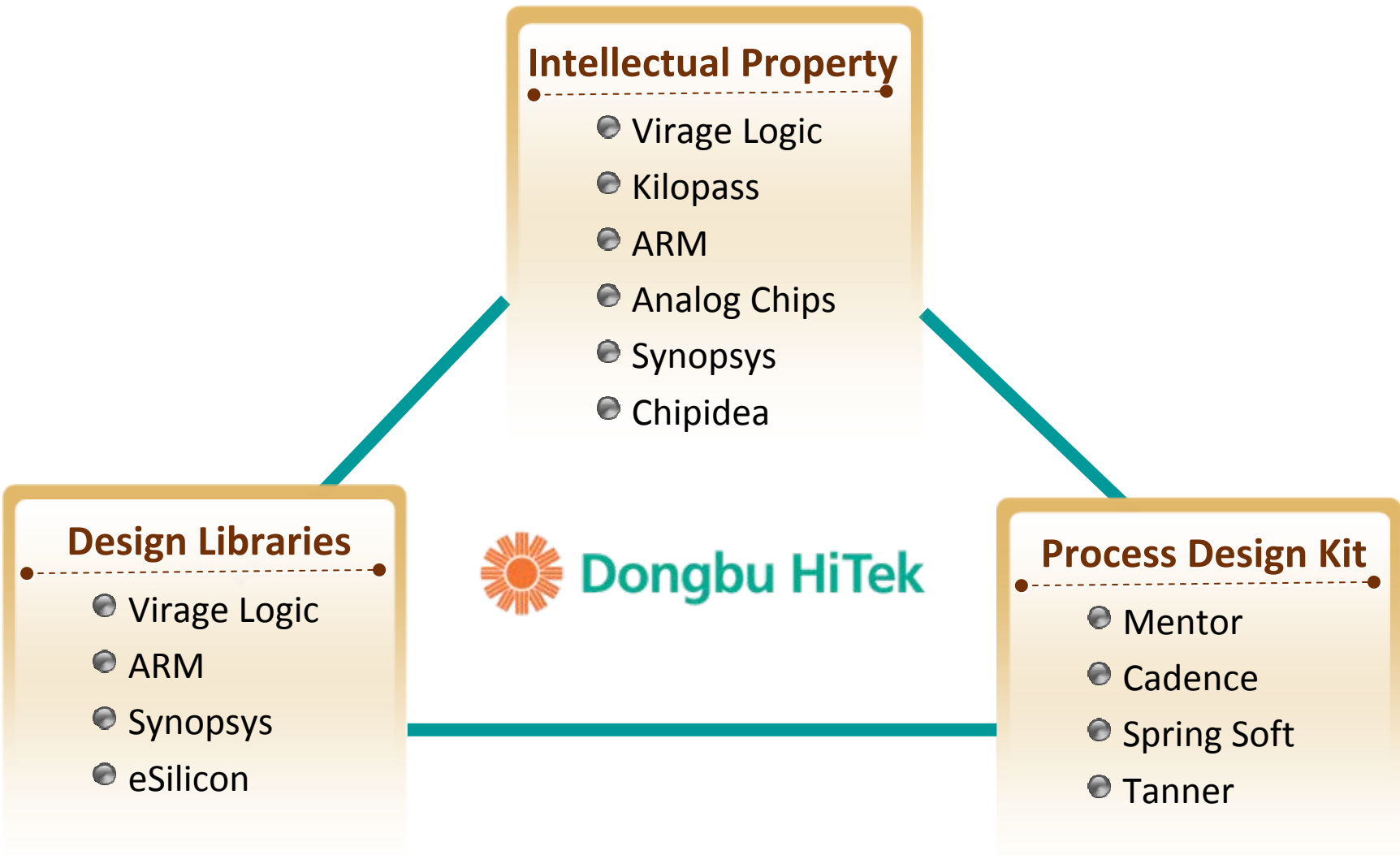


# Technology Roadmap - Logic

● Available      ● Planned

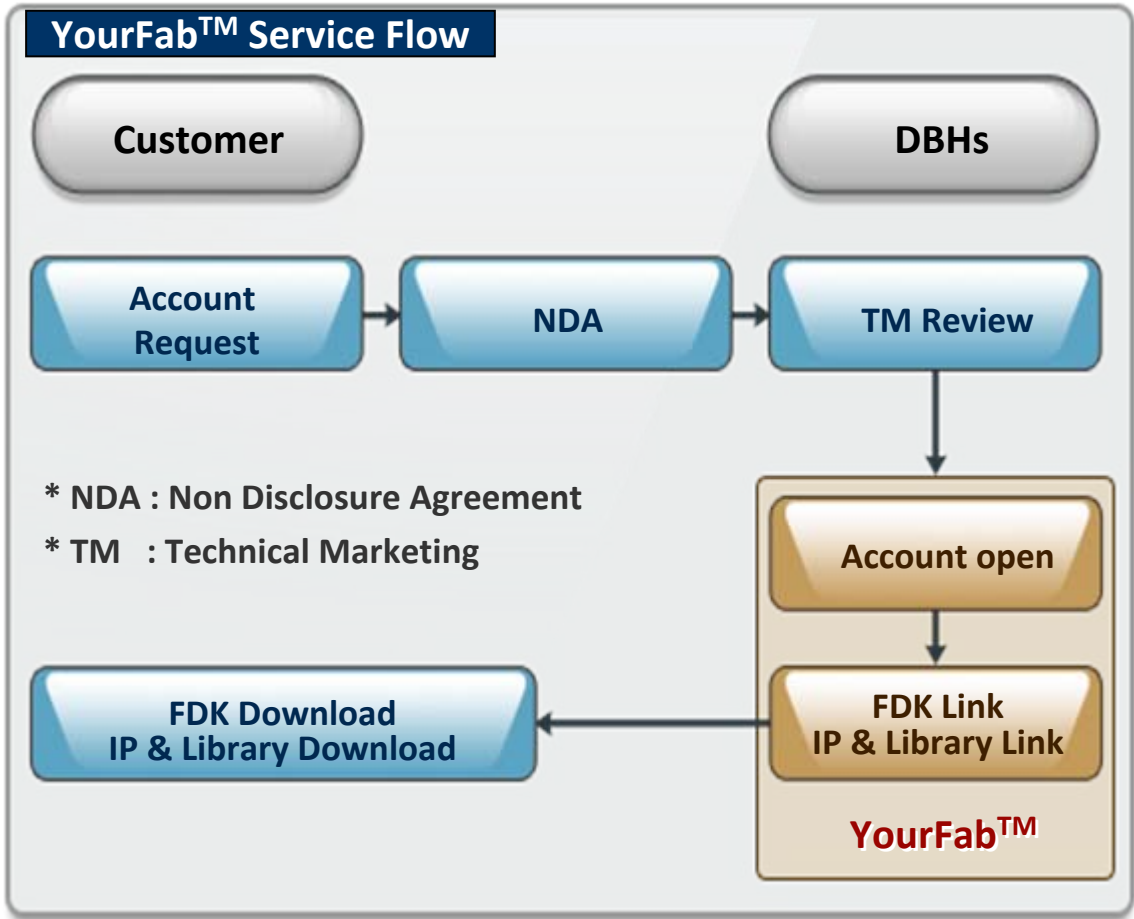


# Customer Support - IP, Library, PDK





# Customer Support – YourFab™ Service



# Customer Support – ShuttleChip™ Service

## MPW Schedule

Process	Tech	Fab	1Q			2Q			3Q			4Q		
			Jan	Feb	Mar	Apr	May	Jun	Jul	Aug	Sep	Oct	Nov	Dec
High Voltage (AN180&BD180)	0.18um	Fab1	12	23		06	25		08	24		12	22	
High Voltage (BD350)	0.35um	Fab1	26		09	20		08	20		15	26		07
Mixed-Signal	0.11um	Fab2	26			20			20			26		
	0.15 ~ 0.18um	Fab2					25				24		22	
	0.15 ~ 0.18um	Fab1		09			11				10		08	
e-Flash	0.13um	Fab2			23						10			
	0.15 ~ 0.18um	Fab2							06					21

# Customer Support – Certifications



## Quality Certification

- ISO/TS 16949, ISO 9001

## ESH Certification

- PSM, ISO14001, OHSAS 18001

## Security Certification

- ISO27001



## ROHS Activity

- All products manufactured by Dongbu HiTek are in compliance with the RoHS directive. Products by Dongbu HiTek do not contain Lead, Mercury, Cadmium, Hexavalent Chromium, PBB and PBDE.

# YOUNG Dongbu!

- Y** Yes , we can do
- O** On Time Delivery/Development
- U** Unlimited Challenge
- N** No Loss , More Profit
- G** Great People/Technology

# Thank You